

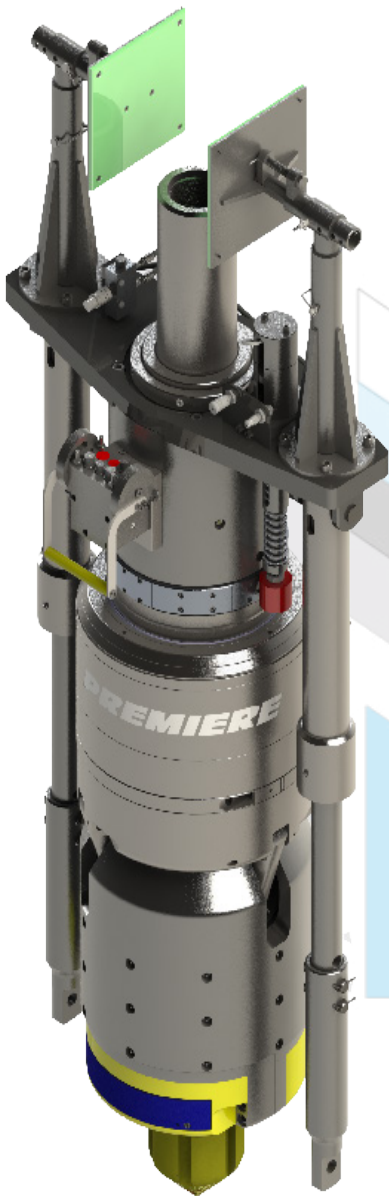
PRT™

350 Ton Premiere Running Tool

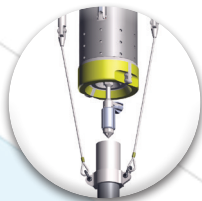
THE BEST CASE SCENARIO IN DRILLING OPERATIONS

DESIGNED WITH SAFETY IN MIND

Premiere's casing running tool (PRT™) is the result of cutting edge engineering and field tested standards. The PRT™ features a compact design, rugged construction, and the versatility to run various pipe sizes and weights without compromising performance. Designed with full string handling capabilities (simultaneously pickup, drill, run, ream, rotate, and reciprocate) for casing running operations, the PRT™ decreases the chances of sticking pipe downhole. The PRT™ has the ability to fill up and reciprocate the pipe during critical make up or break out procedures. Integrated with a fail safe True-Lock design, the PRT™ virtually eliminates the risk of dropping pipe.

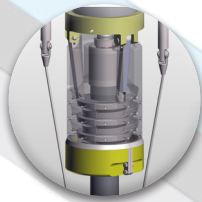


350 Metric Ton PRT
Patent #
[8,157,004],[8,893,772],[8,240,372]



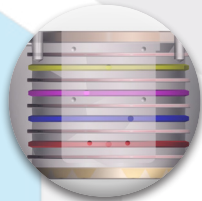
Casing Running Package

- Eliminates the need for an elevator, tongs, bails, and stabber
- Inherently safer than running conventional casing
- Solid forged body with internally plumbed hydraulic hoses and fittings so as not to be damaged while in use



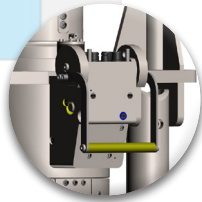
Fail Safe Wedge Grip Slip Design

- 100% grip on pipe, even if hydraulic pressure is lost
- Compatible with casing sizes ranging from 4 1/2" (114.3 mm) to 30" (762 mm)



High Speed Swivel

- Stores energy to achieve up to 230 RPM
- Rotates for extended hours at maximum torque promoting optimal casing drilling operations



Handles With Ease

- Quick Connect System provides significantly faster rig-up/rig-down times (45 minutes on average)
- Compact design allows for easier handling
- Approximately 30-50% lighter than the competition



Remotely Operated Control Panel

- Controlled by a single person through a user friendly, remotely operated control panel
- Four-tier safety design significantly reduces the risk of dropping pipe



Interlock System & Slip Position Indicator

- Greatly reduces the risk of dropped pipe
- Ensures slips are set on casing and not collar



MAGNUM
MANUFACTURING

THE BEST CASE SCENARIO IN DRILLING OPERATIONS

PREMIERE DESIGNED

Since the PRT™ was designed in-house, Premiere has the ability to instantly make design changes to better suit the needs of our customers. Each tool is tested and retested so that we may ensure a safe and efficient product that stands up to the rigors of today's oilfield. The PRT™ is truly years ahead of competing CRTs.

API 8C SPECIFICATIONS

Designed and manufactured to meet and exceed the API 8C specifications, the PRT™ can handle more weight and rotational torque, allowing us to perform more critical movements without having to stop the casing run. Rotational torque remains consistent regardless of any increases in string weight or pump pressure.

350 TON PRT SPECIFICATIONS

	Standard	Metric
Top Drive Connection	As Per Customer Request	As Per Customer Request
Max Hoisting Capacity	350 Tons	317 Metric Tons
Casing Sizes	4 1/2" to 30"	114.3 mm to 762 mm
Max Rotating Speed	230 RPMs	230 RPMs
Max Pressure Rating	10,000 psi	68.9 MPa
Max Torque	50,000 ft-lbs	67,790 Newton Meters
Length (with fill-up tool)	99"	2.515 Meters
Width	21.75"	.55 Meters
Weight (dressed)	5,693 lbs	2,582 kgs

PREMIERE RUNNING TOOL

Reverse designed with Safety Mind

Premiere's casing running tool (PRT™) is the result of cutting edge engineering and field tested standards. The PRT™ features a compact design, rugged construction, and the versatility to run various pipe sizes and weights without compromising performance. Designed with full string handling capabilities (simultaneously pickup, run, rotate, and reciprocate) for casing running operations, the PRT™ decreases the chances of sticking pipe downhole. The PRT™ has the ability to fill up and reciprocate the pipe during critical make up or break out procedures. Integrated with a fail safe Hydra-Lock design, the PRT™ virtually eliminates the dropping of pipe during casing operations.

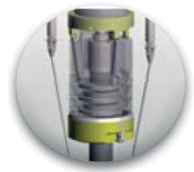
Features and benefits

Casing Running Package



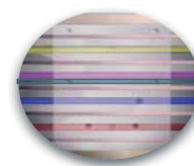
- Eliminates the need for an elevator, tongs, bails, and stabber.
- Inherently safer than running conventional casing.
- Solid forged body with internally plumbed hydraulic hoses and fittings so as not to be damaged while in use.

Fail Safe Wedge Grip Slip Design

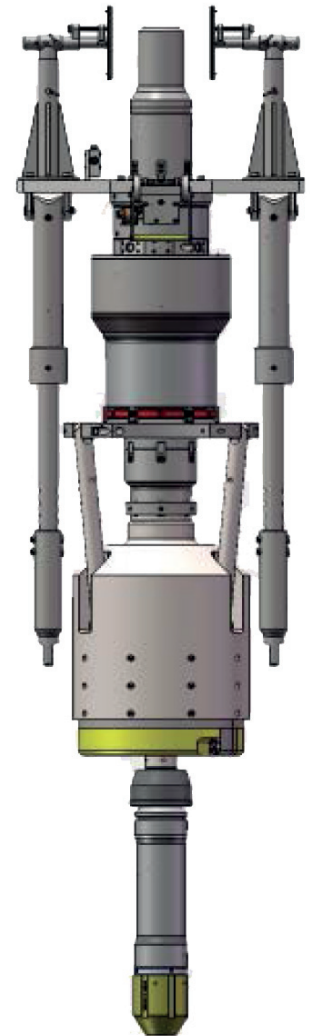


- 100% grip on pipe, even if hydraulic pressure is lost.
- Compatible with casing sizes ranging from 4 1/2" to 13 3/8".

High Speed Bearing Swivel



- Stores energy to achieve greater RPMs (2-10x greater than competing CRTs).
- Rotates for extended hours at maximum torque.



Featuring 350 Ton (25.5" OD) Bowl
Patent Pending

Handles With Ease



- Quick Connect System provides significantly faster rig up/ rig-down times (45 minutes on average).
- Compact design allows for easier handling.
- Approximately 35-50% lighter than the competition.

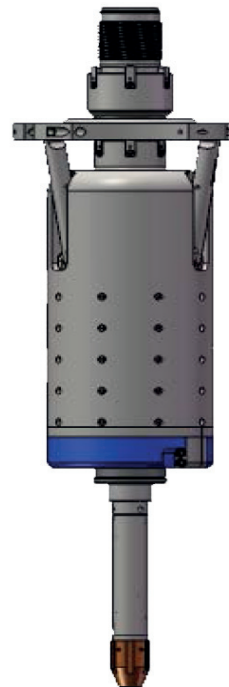
Remotely Operated Control Panel



- Controlled by a single person through a user friendly, through a user friendly, remotely operated control panel.
- 3 tier safety design significantly reduces chance of dropping pipe.



350 Ton (19.9"
OD) Bowl
Patent Pending



350 Ton (20"
OD) Bowl
Patent Pending



PREMIERE RUNNING TOOL

Premiere Design

Since the PRT™ was designed in-house, Premiere has the ability to instantly make design changes to better suit the needs of our customers, rather than having to wait on approval from the manufacturer. Each tool is tested and retested so that we may ensure a safe and efficient product that will stand up to the rigors of today's oilfield. The PRT™ is truly designed against the needs and wants of our customers.

API 8C Specifications

Designed and manufactured to API 8C specifications, the PRT™ can handle more weight and rotational torque, allowing us to perform more critical movements without having to stop the casing run. Rotational torque remains consistent regardless of any increases in string weight.

One of a Kind

Premiere is the only company to offer a casing running tool rated at 500 Tons.

500 TON Modular PRT

500 TON MODULAR PRT SPECIFICATIONS*														
Bowl Configuration	20" OD/External			19.9" OD/External			25.5" OD/External							
Pipe Handling Range	4-1/2" - 9-5/8"			9-5/8" - 13-3/8"			9-5/8" - 13-3/8"							
Load Rating (tons)	350			500			350							
Total Weight (lbs)	6000			6000			6300							
Overall Tool Length (in/cm)	130/330.2			156/396.24			165/419.1							
Overall Tool Width (in/cm)	11.375/105			11.375/105			11.375/105							
Hydraulic System Pressure (psi)	2750			2750			2750							
Max Torque**	50000			50000			50000							
Max Rotating Speed (rpm)	250			250			250							
Pipe Sizes***	4-1/2"	5-1/2"	7"	7-5/8"	9-5/8"	4-1/2"	5-1/2"	7"	7-5/8"	9-5/8"	9-5/8"	10-3/4"	13-3/8"	
Max Circulating Pressure****(psi)	5000		4250		3750		5000		4250		3750		2000	
Circulating Rate (bbl/min)	8		15		25		8		15		25		25	

TRANSPORT BASKET SPECIFICATIONS				
Length (in/cm)	173/439.42		Height (in/cm)	38/96.52
Width (in/cm)	54/137.16		Weight (lbs/kg)	2700/1224.69

NOTES:

*PRT LOAD CAPACITY IS DETERMINED BY THE RATED CAPACITY OF THE SLIP BOWL IN USE--SERVICE REQUIREMENT MUST NEVER EXCEED THIS RATING

** MAXIMUM TORQUE SHALL BE DEPENDANT ON TOP DRIVE RATING

*** PIPE SIZE SHALL DETERMINE MUD VALVE SELECTION--CARTRIDGE STYLE MUD VALVE UTILIZES VARIABLE BORE SIZES.

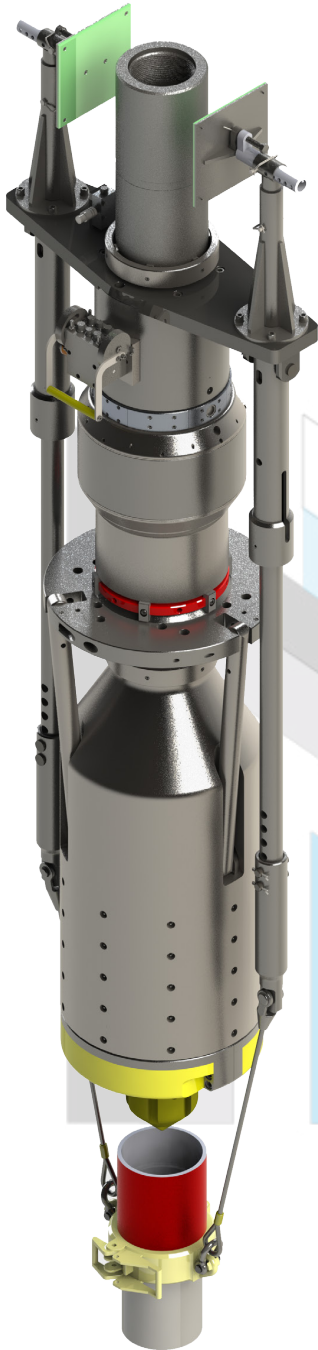
**** MAXIMUM CIRCULATING PRESSURE IS DEPENDANT ON PACKER CUP MANUFACTURER'S MAXIMUM PRESSURE RATING (REFERENCE GLOBAL ELASTOMER'S PRESSURE TESTING REPORT)



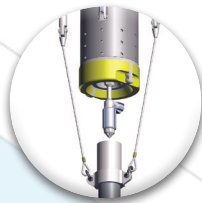
THE BEST CASE SCENARIO IN DRILLING OPERATIONS

DESIGNED WITH SAFETY IN MIND

Premiere's casing running tool (PRT™) is the result of cutting edge engineering and field tested standards. The PRT™ features a compact design, rugged construction, and the versatility to run various pipe sizes and weights without compromising performance. Designed with full string handling capabilities (simultaneously pickup, drill, run, ream, rotate, and reciprocate) for casing running operations, the PRT™ decreases the chances of sticking pipe downhole. The PRT™ has the ability to fill up and reciprocate the pipe during critical make up or break out procedures. Integrated with a fail safe True-Lock design, the PRT™ virtually eliminates the risk of dropping pipe.

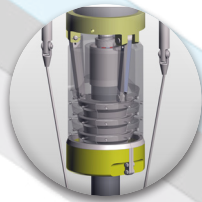


750 Ton ID PRT™
Patent #
[8,157,004],[8,893,772],[8,240,372]



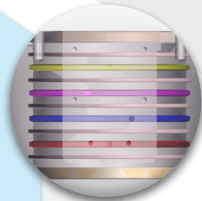
Casing Running Package

- Eliminates the need for an elevator, tongs, bails, and stabber
- Inherently safer than running conventional casing
- Solid forged body with internally plumbed hydraulic hoses and fittings so as not to be damaged while in use



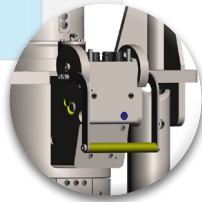
Fail Safe Wedge Grip Slip Design

- 100% grip on pipe, even if hydraulic pressure is lost
- Compatible with casing sizes ranging from 4 1/2" (114.3 mm) to 30" (762 mm)



High Speed Swivel

- Stores energy to achieve up to 230 RPM
- Rotates for extended hours at maximum torque promoting optimal casing drilling operations



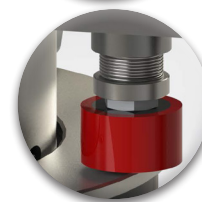
Handles With Ease

- Quick Connect System provides significantly faster rig-up/rig-down times (45 minutes on average)
- Compact design allows for easier handling
- Approximately 30-50% lighter than the competition



Remotely Operated Control Panel

- Controlled by a single person through a user friendly, remotely operated control panel
- Four-tier safety design significantly reduces the risk of dropping pipe



Interlock System & Slip Position Indicator

- Greatly reduces the risk of dropped pipe
- Ensures slips are set on casing and not collar

THE BEST CASE SCENARIO IN DRILLING OPERATIONS

PREMIERE DESIGNED

Since the PRT™ was designed in-house, Premiere has the ability to instantly make design changes to better suit the needs of our customers. Each tool is tested and retested so that we may ensure a safe and efficient product that stands up to the rigors of today's oilfield. The PRT™ is truly years ahead of competing CRTs.

API 8C SPECIFICATIONS

Designed and manufactured to meet and exceed the API 8C specifications, the PRT™ can handle more weight and rotational torque, allowing us to perform more critical movements without having to stop the casing run.

Rotational torque remains consistent regardless of any increases in string weight or pump pressure.

750 TON PRT SPECIFICATIONS

	Standard	Metric
Top Drive Connection	As Per Customer Request	As Per Customer Request
Max Hoisting Capacity	750 Tons	680 Metric Tons
Casing Sizes	4 1/2" to 30"	114.3 mm to 762 mm
Max Rotating Speed	230 RPMs	230 RPMs
Max Pressure Rating	10,000 psi	68.9 MPa
Max Torque	85,000 ft-lbs	115,245 Newton Meters
Length (with fill-up tool)	176.5"	4.483 Meters
Width	45.375"	1.15 Meters
Weight (dressed)	12,540 lbs	5,688 kgs
Through-Bore	2.8"	63.5 MM