

9-5/8" RCH

The Rotating Cement Head

QUALITY CEMENTING FOR INCREASED PRODUCTION

A BETTER CEMENT JOB FOR THE LIFE OF YOUR WELL

The Premiere Rotating Cement Head (RCH) will execute your reciprocating and rotating cementing process while conditioning your well during the cement job. Designed for longevity, the RCH features a no-leak swivel design that allows for continuous rotation over extended periods of time, resulting in a better cement job. Modular in design, the RCH can be built to address your unique cementing needs.

FEATURES: A STEP ABOVE THE REST

No-Leak Swivel Design

- Rotate at high RPM for extended periods of time with no decrease in reliability (maximum rotating speed of 80 RPM)
- Safe working pressure of 5,000 psi

Versatility & Flexibility

- Able to tie into CRT or top drive on-site at a moment's notice
- Compatible with all CRT and top drive systems

Modular Configuration

- Quarter turn plug release system
- Drop multiple plugs/balls in varying lengths/sizes
- On-site or facility plug installation with customer/cementer witness
- Compact in comparison to the competition

Quick Connects

- Designed for ease of maintenance
- On-site break down and assembly in one hour

ADDITIONAL FEATURES & BENEFITS

- 350 Ton Built to exceed API 8C
- Broken down, rebuilt, and pressure tested prior to each job
- Significantly faster rig-up/rig-down time for decreased NPT
- All iron assembly from rig floor
- Multiple safety features
- Proven to substantial increase production



Approx. 193"

Patent Pending



MAGNUM
MANUFACTURING

9-5/8" RCH The Rotating Cement Head

QUALITY CEMENTING FOR INCREASED PRODUCTION

9-5/8" RCH Specifications

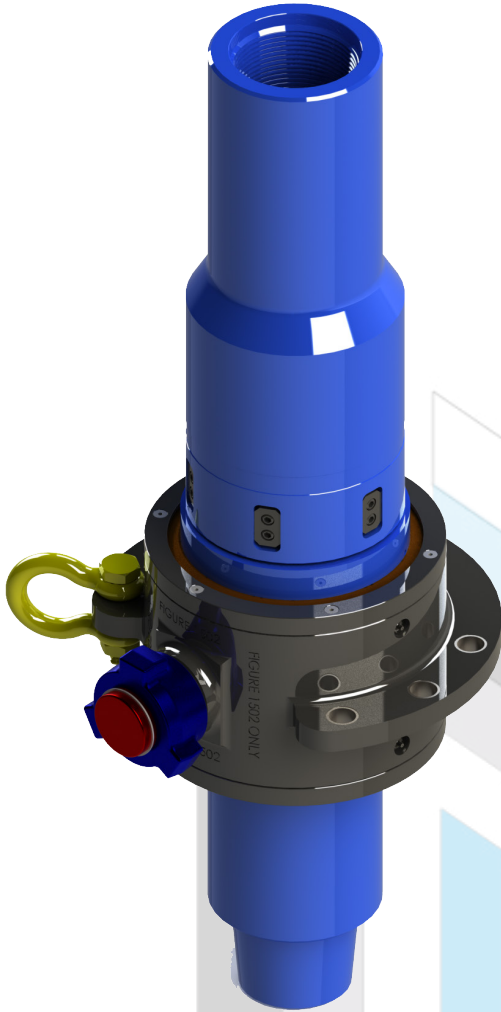
	Standard	Metric
Top Drive Connection	As Per Customer Request	As Per Customer Request
Max Hoisting Capacity	350 Tons	317 Metric Tons
Casing Sizes	9-5/8"	244.5 mm
Tool Weight	3,900 lb	1,769 kg
Tool Length	193"	4.9 m
Max Pressure Rating	5,000 psi	34.47 Mpa
Max Torque	50,000 ft/lbs	67,790 Nm
Max RPM	80 rpm	80 rpm
Rotating Section Swing Diameter	28"	0.71 m
Flow Rating	15 bbl/m	629 m ³ /min
Cement Connections	1502 WECCO	1502 WECCO



MAGNUM
MANUFACTURING

500 Ton Cement Swivel

AGILE CEMENTING SOLUTION FOR AN EVER CHANGING MARKET



Versatility & Flexibility

- Able to tie into CRT or top drive on-site at a moment's notice
- Customizable Top & Bottom Connections
- Compatible with all CRT and top drive systems

No-Leak Swivel Design

- Rotate at high RPM for extended periods of time with no decrease in reliability
- Maximum rotating speed of 80 RPM
- Safe working pressure of 5,000 psi

Quick Connects

- Designed for ease of maintenance
- No-Torque Connections- Assembled by Hand
- On-site break down and assembly in one hour

Additional Features & Benefits

- Meets DNV GL's Offshore Standard DNVGL-OS-E101
- Built to exceed API 8C
- Significantly faster rig-up/rig-down time for decreased NPT
- All iron assembly from rig floor

500 Ton Cement Swivel Specs

	Standard	Metric
Top Drive Connection	As Per Customer Request	As Per Customer Request
Max Hoisting Capacity	551 Tons	500 Metric Tons
Tool Weight	1,000 lb	453 kg
Tool Length	53"	1.3 m
Max Pressure Rating	5,000 psi	34.47 Mpa
Max Torque	50,000 ft/lbs	67,790 Nm
Max RPM	80 rpm	80 rpm
Rotating Section Swing Diameter	22.86"	0.58 m
Flow Rating	15 bbl/m	629 m3/min
Cement Connections	1502 WECO	1502 WECO



MAGNUM
MANUFACTURING